



Item 7 Education

Paul Rickeard, Director of Education/CEO DDMAT



The Church's Mission in Education

- Church schools stand at the centre of our mission. Education of 1 million children. 25% of children in the North East of England attend either a CofE School or RC School. We are now accepted as “Partners” and no longer “Stakeholders”.
- At this time of educational change, the Church as a major provider of schools needs to strengthen and clarify the assertion of this role at governmental, synodical, diocesan and local levels. This approach is essential if the Church's mission and ministry to education through its school system is to thrive.
- The Church as a whole is called to recognise the forthcoming challenges and opportunities fully to meet the needs and expectations of all children in the Church school system and beyond.



Diocese of Newcastle



Our Vision for our specific work in education through church schools is for:

- Each and every child and young person achieving their full potential, by accelerating the pace of their learning across the curriculum.
- Church schools to enable children and young people to have a lively, intelligent and creative engagement with the Christian faith within the setting of a Christian community
- Church schools being the very best they can be spiritually, socially and academically.
- The Christian Faith lived out in practice to make a real difference in the attainment of high standards for each child and young person according to their ability.
- Clergy being fully equipped to serve their local schools, including church schools.
- Governors whom the church appoints being able to ensure that every school does the very best it can in every aspect of its life, including excellence in progress and attainment.
- Staff flourishing, including head teachers, teachers and support staff, developing to their fullest potential and being influenced by the Christian ethos
- The dioceses to make it a priority to offer the highest quality of education in hard-pressed parts of the North East.



Local Context:

3 Local Authorities

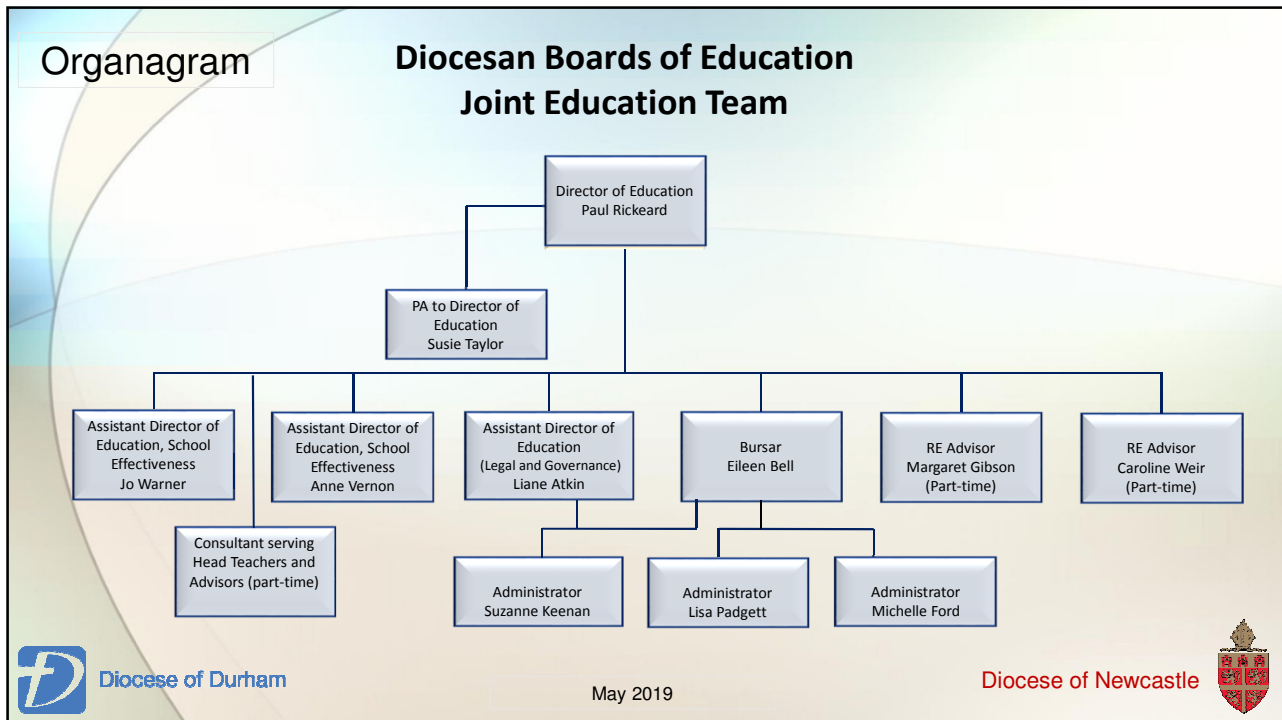
45 Church of England Schools

Supporting the education of 13,000 children – *Increasing!*

Work as a Partner with:

- LA's (Local Authorities)
- RSC (Regional Schools Commissioner)
- Ofsted
- Schools Leaders
- Governors
- Parishes and PCC's





Our Schools:

- No schools in an 'Ofsted Category'
- Our RI Schools (5) – all making the improvements required
- Our work with non-CofE Schools in Mixed Multi Academy Trusts is growing
- NCEA is now three schools within NCEAT
 - ❖ Dukes Secondary
 - ❖ Bishops Primary
 - ❖ Castle Special School
- Rural schools are thriving as we support new ways of working together.

Diocese of Durham

Diocese of Newcastle

Mixed Multi Academy Trusts:

- Newcastle East Mixed Multi- Academy Trust (NEAT) - 5 schools
- Three Rivers Learning Trust (Morpeth) - 7 schools
- Pele Trust (Ponteland) - 6 schools
- Tynedale Learning Trust (Prudhoe) - 8 schools due to convert in Autumn term

In discussion with another community Trust and various community schools who wants to work with the Church of England.



Diocese of Newcastle



Mixed MATS

•All schools governed by single Board of Directors, single Trust single legal entity.
•Separate Academy Trusts with their own URNs within MAT.
•The MAT Board are responsible for decisions on how each academy run and ultimately responsible for each of schools.

5 Members (church majority)

Each academy directly accountable to MAT Board

MAT Board of Directors/Trustees (Governors)

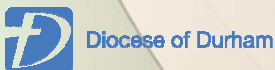
Academy Council

Academy Council

Academy Council

Academy Council

Academy Council



Diocese of Newcastle



How do we as a Team support our schools?

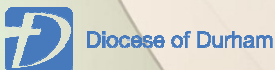
- Leadership and management – Governance and Senior leadership teams – Distinctiveness, Guidance NB most recent ex-officio governor guidance
- Standards and Achievements – Our Section 5 Lead Inspectors RAG rate our schools every term and build packages of support
- RE and Collective Worship
- School Improvement services beyond our Church Schools
- School organisation
- Growth and out reach
- Brokering support



Inspection - New SIAMS* Framework – holding schools to account as CofE Schools:

- Now being used across both Diocese – the bar has been raised
- New grading system – only 5% of schools will be ‘Excellent’
- Training has been comprehensive and challenging
- A deeper understanding of what it is to be a Church of England School is required
- We need to look at ‘Growing Faith’ and how schools, parish and home work together

*Statutory inspection of Anglican and Methodist Schools



Diocese of Newcastle



Understanding Christianity – New RE Curriculum:

- Our RE Advisors Caz and Margaret have now rolled out the training for the Understanding Christianity resource across ALL of our schools.
- All of our Newcastle VA Schools have been trained in the delivery of the new RE Syllabus and our VC schools have asked to use the syllabus as an additional resource to meet the needs of the locally agreed syllabus ('SACRE').
- 3 of our schools have attended 'Discrete RE training' focusing on the teaching of RE in our schools.
- Our Advisors have now started to work with non-Church schools who are asking for our support – they were also asked to present at the Northumberland LA RE Conference

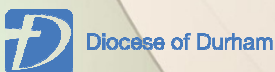


Diocese of Newcastle



Impact:

- 89% of our schools are Good or Outstanding (three are awaiting re-inspection after DFE changes, all are at least Good)
- Newcastle Diocese CofE Schools not only narrowed the attainment gap at KS2 (End of Primary) but performed significantly better than the national average for the last two years
- Our schools are growing in size – numbers of children are increasing
- Mixed MATS working across the region
- Our reputation as being able to deliver credible school improvement is such that it now brings in income which allows us to offer more support
- Our RE team is trailblazing a new curriculum which has been welcomed by our schools as one of the best resources they have
- Supporting DFE at a national level



Diocese of Newcastle



Current Challenges:

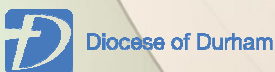
- New Ofsted Framework – Reference Group and response
- Curriculum – working with Durham Diocesan MAT to deliver bespoke training to our schools
- Rural Schools and the future – shared leadership; unique offer
- School finances – schools are having to do more with less
- Poverty Proofing – supporting our schools to help the 'disadvantaged'



Diocese of Newcastle



Questions / Discussion...



Diocese of Newcastle

