

BENEFICE PROFILE



Benefice of Allendale with Whitfield
Ninebanks and Carrshield
Hexham Deanery
Diocese of Newcastle
allendalechurch.co.uk

Together we can and with God's help we will.

The Benefice

The Benefice is situated in the south west corner of Northumberland. To the west is Cumbria and to the south is County Durham.

The nearest town is Hexham, 11 miles from Allendale. (Newcastle 34 miles, Durham 39 miles)

The churches lie in the East and West Allen Valleys. There are three congregations, each worshipping in their own special way (but also sharing each other's worship). During the 2020/21 pandemic we all worshipped together each week on-line.

Two separate Parochial Church Councils are in operation, one for St Cuthbert's, Allendale, the other for Whitfield with Ninebanks. We have compiled this profile together.

We are blessed to have a superb Lay Reader—Tim Burdon, who ministers to the whole Benefice.



Parish Boundaries can be [seen here](#)

CONTENTS

- Our New Rector
- The Benefice
- Allendale and St Cuthbert's Church
- Ninebanks and St Mark's Church
- Whitfield, Holy Trinity and St John's Churches
- Joint Projects and Achievements
- The Rectory
- Financial Information

Pattern of Worship

PRE COVID WORSHIP IN CHURCH BUILDINGS

St Cuthbert's, Allendale	11am each Sunday - Parish Communion (fellowship and coffee afterwards) 10am each Wednesday—Holy Communion
St Mark's, Ninebanks	9.30am 1st and 3rd Sunday—Parish Communion
Holy Trinity, Whitfield	9.30am 2nd, 4th and 5th Sunday—Parish Communion

POST COVID PATTERN OF WORSHIP

Joint Worship	11am each Sunday 1st Sunday at Ninebanks, 3rd Sunday at Whitfield 2nd, 4th and 5th Sundays at Allendale (all live streamed onto YouTube (Click here)) 8.45pm each Wednesday—Compline on Zoom
---------------	--

The services are currently put together by a small team and members of all our churches contribute with intercessions, readings and music. Four members of our congregations are undertaking Lay Ministry training. Our congregations are worshipping together at the various churches and we see enabling people to join us virtually as a continuing ministry.

The current pattern of worship is drawing our churches closer together - we hope that the new incumbent will help us to reflect together on a way forward that helps all the congregations in the Allen Valleys to flourish.



The Area—Allendale and the East Allen Valley

The parish of St Cuthbert, Allendale takes in most of the East Allen Valley and lies entirely within the North Pennines Area of Outstanding Natural Beauty. There are a number of settlements – the villages of Allendale (Town), Catton and Allenheads with smaller settlements at Sinderhope and Sparty Lea. It is home to about 2000 people with roughly half of them living in the village of Allendale.

Forget the sleepy image! We have a dynamic, lively, diverse and active community consisting of local people belonging to families who have been here for generations and a growing incoming population.

[Click here](#) to see an introductory video made by the young people of Allendale Primary School .

There are young people with successful businesses, those who have retired, commuters travelling to north, south, east and west and of course people working locally in farming, retail and tourism. A caravan park, bunk house and good range of self-catering accommodation brings visitors to the valley who often return each year.

In the parish we are fortunate to have many amenities as listed on the left. (Unfortunately no candlestick maker though locally made candle holders may be found in the Forge Arts Centre).

St Cuthbert's Church Family

Our church members come from a wide range of theological backgrounds and experiences. Some from a 'high church' tradition; others favour a more 'modern' approach. Our church family has a good mix of people. Some have worshipped at St Cuthbert's for many decades. Some joined us when they moved to the area, often having been members of a church elsewhere. Others are new to worshipping in a church. During the summer months we are joined by visitors on holiday who often return every year.

St Cuthbert's Electoral Roll is 53 (as at 2021 Annual meeting) .

On an average Sunday morning, at 11am, we have 35—45 adults and 2 or 3 under 16's at church. Usually during the summer months there are Wednesday morning communion services which have smaller congregations of 6-8.

We have a small number of children under the age of 16 who attend church. In common with so many churches, we have very few teenagers, not many people in their twenties and thirties and a significant proportion are over sixty years old. Before the pandemic, as part of Allen Valleys Churches Together we helped to run a monthly Messy Church in Trinity Methodist Chapel in the village. Again pre Covid, a group used to meet for prayer each week, we hope to resume both soon.

AMENITIES

- Haydon Bridge and Allendale Medical Practice operates at the Health Centre with most ancillary services
- A pre-school playgroup
- A primary school.
- Butcher
- Independent Co-op supermarket
- Post office and newsagent
- Library
- Several tea rooms/coffee shops
- Indian take-away
- Pharmacy
- Arts Centre
- Beautician and Podiatrist
- Fire Station
- Physiotherapist
- Sports field for football, cricket, tennis and running
- Various keep fit options
- Recreation ground and several other play areas
- Various public houses and B and B's
- A Brewery
- Sheltered Housing
- Village Halls
- Taxi Service
- Regular bus service to Hexham
- Sci Fi Museum
- Charity Shop
- Kitchen Designer
- Several garages for car maintenance and tyre supplies
- Vets Practice
- And free car parking!

Together we can and with God's help we will.

CHILDREN AND YOUNG PEOPLE

Facilities for children are provided during all services, in a purpose designed area in the back of church. Toys and other activities are available; this is an opportunity for youngsters to keep occupied if they wish, while the parent/carer can keep in contact with what is happening in the service.

MUSIC

Music for the 11am service is provided by our own organist. We also have several musicians playing guitars and recorder. There is a small unrobed choir at this service. Hymns are chosen by the Rector and the organist to reflect the readings/theme of the service.

The church is known for its acoustics and [Music in Allendale](#) hold regular chamber music recitals.

A local singing group the [Dale Singers](#) also hold concerts in church.

Each year [Allen Valleys Folk Festival](#) uses both the church and the church hall.



Worship at St Cuthbert's

We've had these thoughts about the type of worship we have in St Cuthbert's Church

- Currently we use seasonal service booklets, based on Common Worship and other liturgical material from the Church of England.
- Our church has a welcoming atmosphere which we feel is relaxed and comfortable.
- Our services have a quiet dignity and are reverent and sincere.
- We have an active, friendly, lively congregation.
- We feel that any change should be evolutionary rather than revolutionary.
- We feel that the church is always there/available for the whole community/everyone.
- We are outward looking with energy and vision.
- Lay people help in the services with intercessions, reading, serving, choir, bell-ringing, acting as sidesmen, offertory procession, care of linen and serving coffee afterwards.
- Our lay ministry also includes home communion for those unable to attend a church service.



Together we can and with God's help we will.

FLOWER ARRANGERS

A small group is responsible for decorating the church each Sunday on a rota basis, with assistance from other volunteers for special services.

CHOIR

We have a small (unrobed) choir under the guidance of the organist, they sing each Sunday and at all major festivals and are sometimes supported by members of the local Dale Singers.

BELL RINGERS

The Tower has 8 bells and a small but dedicated team of bell ringers (most of whom are members of the congregation) ring each Sunday and practise midweek. This group also ring the bells for weddings and ring at midnight on New Year's Eve as part of the village Tar Barl Ceremony. The group also supervises the maintenance of the bells and the church clock.

LENT COURSES

These courses meet each year and are ecumenical, joining with other members of Allen Valleys Churches Together and meeting in each other's homes. (In 2021 we met on Zoom)



Special Services at St Cuthbert's include:

Christingle

This is held each year on Advent Sunday. All the local schools and youth groups are invited and do take part. The service is normally attended by 200+ people. On Advent Sunday 2020, we held a successful virtual Christingle using zoom. There were 66 devices logged in.

Mothering Sunday and Baptism Reunion

A Mothering Sunday service is held every year. This used to be combined with a Baptism Reunion and personal invitations were sent to families who had a Baptism at St Cuthbert's in recent years. We would very much like the Baptism Reunion to be resumed at another time of the year.

Remembrance Sunday

This is a joint service with the local Methodist Chapel. Each church hosts the service on a rota basis following an open-air Act of Remembrance at the Lych Gate which includes the laying of wreaths. There are also memorials at Allenheads and Keenley where short acts of remembrance take place before or after the main service. Again we moved this service on line at the last minute in 2020 and involved members of the community and Allen Valleys Churches Together in the service, it was attended by 58 devices and turned out to be a very moving service indeed.

All Souls' Day

Everyone is invited to contribute names for whom they wish prayers to be said during the service.

Occasional Offices

Weddings	4 booked for 2021, 2 booked for 2022
Baptisms	2 booked for after the pandemic
Funerals	15 in 2020



Together we can and with God's help we will.

ST CUTHBERT'S OUTREACH AND COMMUNITY CONTACTS

Our church is open every day and members of the community know they are welcome to 'pop in' at any time they wish. There is a facility for leaving prayer requests or needs and members of the congregation pray for those mentioned.

Annual Harvest Event

This is usually held in the Autumn and is both a fund raising activity and forms a link with the local community.

Almshouses

The Incumbent and both our Churchwardens serve on the Board of Trustees

Allen Valley Churches Together

AVCT is flourishing with a group of representatives from each denomination (C of E, Roman Catholic, Methodist, Quakers, Community Church) meeting regularly to share what is happening in each church and joint events and services are organised.

Allendale Fair

The church is involved in this annual event, sometimes with a church activity taking place. AVCT organise a service on the Sunday of the Fair weekend.



Monthly Coffee Morning

This is a regular fund raising event held on the last Saturday of each month in the church hall (during 'normal' times). In addition to coffee there is a raffle and usually cake, book and bric a brac stalls.

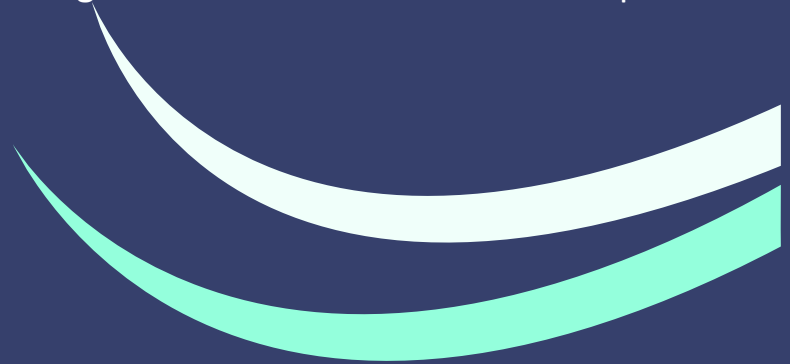
Social Events

A range of social events are held during the year. These, like the coffee mornings, are attended not just by churchgoers, but by the wider community. They include a quiz night with supper and Hymns and Pimm's. We have organised Scarecrow, Christmas Tree and Angel Festivals which have had widespread support, including a virtual scarecrow festival to cheer everyone up during the early days of lockdown.

Community Involvement

Many church members are involved in community organisations, including School Governors, Allendale Parish Council, West Tynedale Food Bank, The Lions, Women's Institutes, Hand and Tower bell ringing, Cricket Club, Community Broadband, Dale Singers, Drama Club, Flower Festival, Folk Festival, Golf Club, High Forest Show, Higher Ground, History Society, Christian Aid, RSPB, Allendale Youth Project.

Together we can and with God's help we will.



ST CUTHBERT'S PCC

Comprising the Rector, Churchwardens, two elected Deanery Synod Representatives and other members of the laity. We have appointed a Secretary, Treasurer, Parish Safeguarding Officer, Domestic abuse Champion, Health and Safety Officer and an Environment Champion.

The PCC meets 6 times per year on alternate months and since March 2020 we have been meeting using zoom, including some joint meetings with Whitfield and Ninebanks PCC, with whom we work closely.

STANDING COMMITTEE

Comprising the legal officers (Incumbent, Churchwardens, PCC Secretary and Treasurer). The committee oversees details of finance and building issues; together with other significant issues that may arise.



St Cuthbert's Church

There has been a church here since early times. One of the members has produced a comprehensive guide to the church which is available for purchase at the back of the church.

St Cuthbert's Church Hall

This is adjacent to the church, it is in good repair. It is used for both parish events and by local community groups for a range of activities.

Churchyards and their Maintenance

There is a closed churchyard around St Cuthbert's Church. The area is maintained by volunteers from the parish and the village. Northumberland County Council has overall responsibility for the gravestones, trees and grass cutting, we are currently developing a 'no mow' wildlife area in the churchyard.

Most burials now take place at the parish council run cemetery not far from Allendale village centre, which includes a woodland burial area.

St Cuthbert's has responsibility for St Peter's Churchyard at Sparty Lea, although the church is now a privately owned. The churchyard is cared for by local dedicated volunteers.

St Cuthbert's Finances

St Cuthbert's PCC has a Treasurer who is a retired Financial Director and is also our Gift Aid Scheme administrator.

The PCC has a commitment to paying its Parish Share in full. This commitment has been met over many years, but in recent years to achieve this, some money has had to be taken from reserves.

The Church currently has regular gift-aided and non-gift-aided givers mainly by standing order. As at the end of December 2020, our General Fund stands at £10,911 and our PCC Unrestricted Designated Fund at £6,478. The latest summary of accounts is enclosed.

Together we can and with God's help we will.





The Area—Ninebanks and the West Allen

Ninebanks has a very diverse, supportive and active community who regularly meet for various get togethers throughout the year. The community support each other, the church and the church hall.

The parish extends northwards along the West Allen Valley from Carrshield to Whitfield and includes the Mohope Valley. Ninebanks is approximately half way between Carrshield and Whitfield and is approximately 5 miles from Allendale.

There is a small 'village' of nine houses, a church and a church hall, which is approximately half a mile south of the village. Many people have relatives who live at both ends of the valley and in the East Allen Valley. Ninebanks is set in 'upland countryside' (moorland and cattle/sheep grazing).

The area borders both Cumbria and Durham and is designated as an 'Area of Outstanding Beauty'. It attracts a lot of walkers and people who simply enjoy the breath-taking scenery.

Throssel Hole Buddhist Abbey and Retreat Centre is halfway between Carrshield and Ninebanks and the residents and guests can be regularly seen walking along the country roads.

Daily public transport is non existent, however there is a weekly bus on a Tuesday which runs through the valley into Hexham. This has been in place for many years, originally to allow people to attend Market Day in Hexham. Most people have their own transport.

The main local industry is hill farming. Some people commute to Hexham and Allendale and some further afield to Newcastle, Carlisle or Durham.

Most of the young people from this area attend schools in Allendale, Whitfield, Haydon Bridge or Hexham.

The properties in this area are predominantly owner occupied although there are a few houses owned and rented out by Whitfield Estate.

St Mark's Church Family

We have a very committed and caring church community who work very hard to keep the church active, lively, welcoming and well looked after.

Congregations are drawn primarily from within the parish although we have a couple who worship with us from neighbouring Cumbria and regular worshippers who have holiday homes in the area.

The majority of regular worshippers are in the older age groups but younger people are encouraged and do occasionally attend, especially for special services and main Festivals. As in many parishes, the best attendances are for baptisms, weddings, funerals and seasonal services. Local people attend special services such as the Christmas Midnight Eucharist, the Carol Service, Easter Sunday and Harvest Festival.

The church members come from a varied range of theological backgrounds and experiences and so we have a good mix of people who welcome new ideas.

AMENITIES

- Church
- Church Hall
- Mobile Post Office (twice weekly)
- Milk Doorstep Delivery
- Grocery Delivery from Allendale Co-op
- Weekly Bus Service to Hexham
- The very popular 'Isaac's Tea Trail', a 58km circular walk, runs through the Ninebanks and Mohope valleys and there is a 'rest point' at the Hearse House a few hundred metres south of St Mark's.
- The Hearse House has a very small interesting information room relating to Isaac Holden's life and travels. Information about the Tea Trail is housed at the back of St Mark's Church.
- Very popular and active Youth Hostel at Mohope which is used by walkers, for holidays and private functions.

SPECIAL SERVICES

Annual Carol Service

The annual Carol Service usually takes place the Friday before Christmas Eve. It is very well attended by all of the community. Approximately 30 people attend and there is an informal buffet in the hall afterwards.

Harvest Festival

The Harvest Festival is usually the first Sunday in October at 2.30 p.m. and is extremely well attended. Approximately 40-50 people attend and there is a harvest tea afterwards in the church hall.



Worship at St Mark's

For many years the Sunday Services have been at 9.30am.

In normal times, there is a Communion Service at St Mark's every 1st and 3rd Sunday as well as special services at main festivals.

The annual Carol Service in the West Allen Valley is held at St Mark's as is the Midnight Eucharist on Christmas Eve which alternates each year with St Cuthbert's at Allendale.

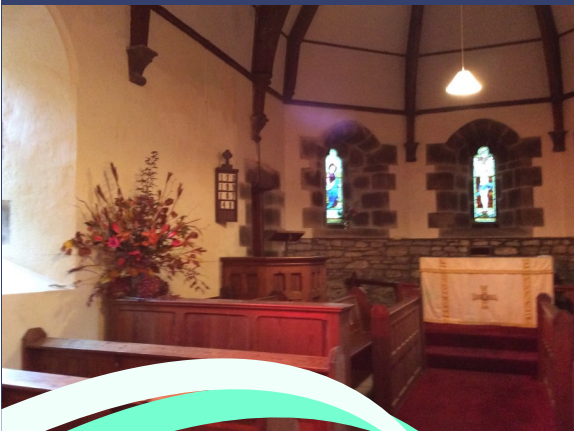
Communion Services have been primarily conducted using the Common Worship in traditional language but other orders have been frequently used for special services.

Whilst the practise of worship has been more 'traditional' the congregation is open to a more modern approach.

At the 2021 APCM there were 17 people on the combined electoral roll and the average number of people attending Sunday services on a regular basis is about 15.

Occasional Offices

Weddings	2 in the last ten years
Baptisms	3 in the last ten years
Funerals	7 funerals and 3 burials of ashes in the last ten years.



Together we can and with God's help we will.

ST MARK'S PCC

We have a joint PCC with Whitfield comprising the Incumbent, the Churchwardens, one Deanery Synod Representative, a Secretary, a Treasurer, a Parish Safeguarding Officer, a School Governor and an Environment Champion.

Our finances are mainly dependant on fundraising events as well as regular giving.

The parish share is paid to date and we have no debts. We have recently been awarded a £10K grant for the church hall fund (this is a grant from the County Council to church halls for loss of income due to the Coronavirus

OTHER INSTITUTIONS

Alms are given to various charities and each year, a different member of the PCC chooses a charity, that we will fundraise for.

Harvest offerings are donated to the West Northumberland Food Bank.



Working Together

Voluntary help

We have a lot of voluntary help. There are two Churchwardens, Organist/s, a Parish Safeguarding Officer, a Deanery Synod Representative and a Domestic Abuse Champion. Various members of the congregation clean the church and church hall, arrange flowers and help to keep the churchyard tidy.

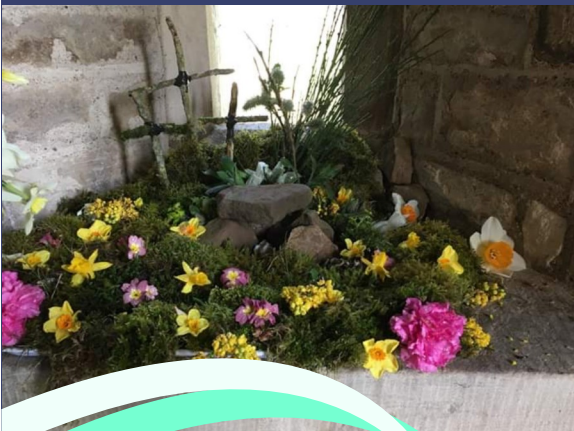
Members of the congregation read the lessons and, since 'attending' the on line services are also leading the intercessions.

Lay Participation

There is a strong tradition of involvement of the laity in pastoral work. Support and a visit, if needed, is given to those unable to go out. It is more difficult to 'visit' on behalf of church now because of safeguarding issues.

Evangelism

There are various social events throughout the year which are well supported by the community. We value the attendance of the incumbent at these events as it enables greater understanding and communication between 'church' and community. Events have included: an annual Ceilidh, Harvest Tea/Supper, Carol Service and buffet, Beetle Drive, Race Nights and various other fundraisers.



Together we can and with God's help we will.

CHURCHYARDS AND THEIR MAINTENANCE

St Mark's Churchyard is still in use and is well maintained by volunteers although a professional grass cutter is used.

Carrshield Churchyard is also still in use and is well kept in exchange for a small fee.



St Mark's Church

Our church is a simple building built for the lead mining community in 1764. It has no transepts. There is a vestry joined to the north wall, just off the chancel, this then terminates in an apse in which the altar stands.

Heating is provided by efficient wall mounted radiant heaters. These were all renewed within the last five years along with the total rewiring of the church.

The building is in a good state of repair. Music is provided by a harmonium.

St Mark's serves the whole of the southern part of the West Allen Valley and it is well supported locally. It is a 'favourite' with many visiting clergy.

Our church is always open and anyone can 'pop in' for quiet prayer and reflection. (currently only open on a Sunday because of Covid 19).

We have a visitors book and a prayer request box.

St Mark's Church Hall

The church hall is adjacent to the church and is used both by church members and the local community. There has been various work done over the years, most recently the installation of new toilets and a chair lift to enable access for people with mobility issues. There are plans being drawn up for a total refurbishment of the kitchen area. Quotations are being sought from tradespeople, so that grant applications can be made.

The church congregation uses the hall for social events, the occasional baptism/funeral reception, fundraising events and PCC meetings.

The wider community use the hall for a monthly 'pop up' pub (a licence to sell alcohol has been obtained), a weekly exercise class, local and national elections, a check point for the Allendale Challenge and private parties and meetings. Whitfield WI will be starting to use the hall for some of their meetings in the near future.



Together we can and with God's help we will.

ST MARK'S OUTREACH COMMUNITY INVOLVEMENT

Church Activities and Social Work

Church members volunteer in the school at Whitfield both on a regular basis and on special occasions. We do not have Junior Church. Members initiated the 'Open the Book' project at Whitfield School.

We have been operating a phone 'buddying' system during the Covid 19 pandemic, keeping in touch and supporting local people. We do not have any Lent Study groups or Prayer groups but some members join the groups from Allendale.

Some of us are part of joint groups formed between the West Allen and Allendale churches i.e. The Parish Outing group, The Know Your Church Know your Neighbourhood group (KYCKYN) and a few join St Cuthbert's choir for special services.

Many of us have links with local organisations which help us to interact with the wider community e.g. WI, the Forge (Allendale Community Art Hub), Allendale Agricultural Show, the Farmers Ball, the pop up pub, the Allen Valleys Get Together Group, the West Northumberland Food Bank. etc.

We have had some very successful joint ventures with Allendale, involving the wider community, especially the 'Angel Festival' last year.



Relationships with other Parishes

There are no formal relationships with neighbouring parishes except, of course, Allendale. There are joint Patronal Services, Midnight Eucharist, All Souls' and Christingle Services.

We enjoy a joint annual 'away day' parish outing and an 'at home' get together. The churches in the two valleys have started to interact more frequently over the last 3-4 years and we support each other's fundraising activities. The two PCC's have the occasional joint meeting and we have increasingly 'pulled together' during the pandemic and interregnum.

The two parishes have worshipped together every Sunday using the online service and since lockdown finished we continue to worship together.

We are now better acquainted with each other through joining together in the church services and on line chat sessions .

Our Hopes for the Future

The church is still a source of pleasure, support and pride for the locals and it is well supported by the community. We hope to encourage more community participation in our services and events, always taking care not to clash with other local events which we support.

Although we wish to retain our own identity, we will welcome and embrace more joint services/events/integration between the two parishes.

Together we can and with God's help we will.



The Area—Whitfield and the West Allen

The A686 which follows the line of the West Allen valley up to Alston and ultimately to the Lake District, comes up from the A69 in the Tyne Valley about 8 miles from Whitfield. The area is equidistant between Newcastle and Carlisle and it takes around 50 minutes to reach either city. The market town of Hexham is 13 miles away, Allendale 4 miles, Haydon Bridge and Haltwhistle 6 miles.

The West Allen communities are made up of hill farming families with a number of outlying farms and cottages surrounding the village, a number of commuters who work in Hexham or Newcastle as well as self employed people working from home and some local businesses unconnected with farming. Within the community there are Christians (C of E, Catholic and Methodist) a Buddhist Monastery and Baha'is.

The old village of Whitfield was originally situated up a steep hill off the A686. Today there are a few farms and cottages, plus the original Norman church of St. John's and the Church of England Primary School. It is thought that there has been a place of worship on the site of St. John's since the 8th Century and it certainly has a particularly special atmosphere. Services for the regular congregation are held there from January to March with a special service to mark Candlemas with school participation in late January.

The 'new' village runs alongside the main road and the large Victorian church of Holy Trinity is a major feature. It's magnificent stone tower once earned it the name of 'The Cathedral of the Allen Valleys'. Both the churches are in good condition and the churchyard at Holy Trinity has recently been given land to extend into as it is running out of space. It is planned to make the extension an environmentally friendly churchyard. Weddings, baptisms and funerals take place at this church and it is also used by a regular congregation.

The small village of Whitfield includes [The Elk's Head](#), (a pub/inn) and [The Village Pantry](#) which sells essentials and contains a small, popular cafe. The Whitfield Estate Office and estate businesses such as the sawmill are situated nearby. There are several families, retired people and estate workers living here.

There are cottages and houses along the road towards Ninebanks and the Caravan and Lodge Park tucked down in the valley on the left. Lodges are for sale but are also rented out as holiday lets. The caravans, occupied as holiday homes, create a 'holiday' community during the summer months.

Above this area some ancient woodland (part of the original Caledonian Forest with Sessile Oaks) faces the Alston road.

The Valley is designated an 'Area of Outstanding Natural Beauty'. During the summer months visitors come to walk and enjoy the views, some staying at the Elk's Head or local B&Bs. From August 12th to the end of January there is commercial shooting which provides an income for casual workers and students and brings a varied cross-section of people into the valley, from the occasional celebrity to local farmers. The Whitfield Estate employs a permanent staff of around 20 and casual labour on a seasonal basis. Most employees live on the estate or locally.

Although the A686 runs along the valley bottom, public transport in the West Allen Valley is not good and most people have to rely on their cars. There is access to swimming pools and other sporting facilities in Hexham, Haydon Bridge and Haltwhistle which also have some excellent shops, banks and other facilities.

AMENITIES

- Holy Trinity Church
- St John's Church
- Village Hall
- C of E Primary School
- The Elk's Head Pub/Hotel
- The Village Pantry (essentials and café)
- Grocery Delivery from Allendale Co-op
- Weekly Bus Service to Hexham
- Daily Bus Service to Keswick in Cumbria between July and September
- Caravan and Lodge Park

SPECIAL SERVICES

Annual Candlemas Service

The Candlemas service is held at St John's at the end of January, with school participation, taking place in the late afternoon. A member of the congregation goes into school to make candles with the children.

Remembrance

Each year 'at the going down of the sun', a Remembrance Service takes place at the Holy Trinity Memorial in the Churchyard.

Clergy and the School

Services involving the school take place during the day usually at St John's. Clergy are encouraged to take monthly morning assemblies in school, pre-planned with the Headteacher. They also volunteer as a school governor.



Worship at Holy Trinity and St John's

All the churches in the Allen Valleys remained closed for over a year due to Covid. The extended closure was in part due to the Interregnum as many retired clergy were self isolating due to their age. At the start of lockdown we joined forces with St Cuthbert's and St Mark's to create regular Sunday morning virtual services, pre-recorded on YouTube and also on Zoom. Members of all three parishes regularly read the lesson and lead the intercessions.

The online services have been popular and have enabled those previously unable to get to church due to a disability to take part. They are now being continued as a livestream, as the churches re-open, to give people a chance to be involved even if they cannot get to a building. In addition, there is a mid-week zoom Compline service and two lively zoom coffee sessions each week which help everyone attending, especially those isolating on their own. Superfast Gigabit Broadband has recently been installed at Holy Trinity and we hope to offer a livestream service for weddings in the future.

Prior to Covid, Eucharist services in Whitfield took place at Holy Trinity at 9.30am on the second, fourth and fifth Sundays of the month from April to December inclusive, alternating with Ninebanks. From the end of December to late March services take place at St John's.

Services at Whitfield use Common Worship, using traditional language where possible. Variations in the form of service are encouraged where appropriate. At the 2021 APCM there were 15 people on the combined electoral roll. Christmas services usually involve a Christmas morning service at Holy Trinity which is generally well attended.

Recent online services have largely been organised by Tim Burdon who is our Reader in the Allen Valleys. Readings and Intercessions were either pre-recorded or on zoom and a rota system was used so each area was represented. A moving reading of The Lords Prayer was pre-recorded and included many of the regular congregation some of whom were isolating for many months.

Occasional Offices

Weddings	14 in the last ten years
Baptisms	27 in the last ten years
Funerals	11 funerals in the last ten years.



Together we can and with God's help we will.

Whitfield PCC

We have a joint PCC with Ninebanks comprising the Incumbent, the Churchwardens, one Deanery Synod Representative, a Secretary, a Treasurer, a Parish Safeguarding Officer, an Eco Champion and a School Governor.

All those with any responsibilities are encouraged to attend training. Prior to Covid these were held in other parishes but are now possible via zoom meetings.

The parish share is paid to date and we have no debts.

OTHER INSTITUTIONS

Donations are given to a wide range of charities chosen by members of the PCC in rotation, lately to the National Stroke Society, a Romanian community and Peace of Mind which helps refugees housed in Gateshead.

JOINT SERVICES

Joint services with Ninebanks and Alendale have taken place on patronal festivals and special events are publicised in all the Parishes.



Working Together

Whitfield Church of England Primary School

[Whitfield Primary School](#) became carbon neutral 10 years ago and uses a heat pump, photovoltaic panels and a windmill to produce electricity. (Photo of info board bottom left). Surplus electricity is sold to the National Grid. It has recently acquired a wooded area for outside lessons and forest learning. It operates under the umbrella of The Good Shepherd Academy Trust in Cumbria but retains its link with the Newcastle Diocese.

The school have made an introductory video. [Click here.](#)

A group of Parishioners wanted to start training for 'Open the Book' sessions once a month in the school. This is currently on hold due to Covid but we are hoping to get going again when allowed. The school uses the church of St John's for some special services and there are plans for more to take place in the future. The school usually perform their Nativity in Holy Trinity Church, and some families from the school attend church there for major festivals. (In 2020 the Nativity was performed outside, see photo above) The age range is from pre-school to 11 years with a mothers and toddlers group once a week. Members of the PCC go in to help hear reading and one member is the PCC representative on the school board.

Evangelism

Prior to Covid people were able to meet for coffee at the Village Pantry or informally visit those who could not leave home. Since then we have tried to make sure we ring more vulnerable people to check if they are managing or need shopping. It had been thought that a meeting for elderly people either in the pantry or on a quiet day in the pub would be instigated on a regular basis. This is something we are keen to develop in the near future.

The Open the Book group are hoping to re-start their training and go into school once a month for bible stories once Covid has subsided.



Together we can and with God's help we will.

PUB QUIZ

Whitfield hosts a pub quiz in aid of the Church every Christmas which has proved to be a very popular event and is supported by Ninebanks and Allendale. It is a chance for everyone to get together in a relaxed venue and to enjoy a pre-Christmas supper as well as the Quiz.



CHRISTMAS QUIZ & SUPPER

At the Elks Head, Whitfield

on THURSDAY 19th DECEMBER 7.15 FOR A 7.30pm START.
Maximum 4 people per team.

Cost is £5 per person to include supper. (vegetarian option available)

1st prize £60 cash

2nd prize £40 cash

3rd prize £20 cash

There will also be a **RAFFLE** with some brilliant prizes.
Raffle tickets bought on the night and prizes given on the night.

Please register your teams by email to:
sarah@whitfieldarts.co.uk

as an alternative, call 01434 345 272 and leave a message.
We need to know numbers to assist with the catering requirements.
Please register early as there is a limit to the number of people that the pub can accommodate.

Thanks to:
RED ONION KITCHEN DESIGN,
ALLEN VALLEYS PHYSIOTHERAPY and
TR PROPERTY SERVICES

for sponsoring the quiz prizes and everyone who gave prizes for the raffle
Proceeds to Whitfield within Ninebanks PCC

Holy Trinity, St John's and the Churchyard

Holy Trinity and St. John's have East End altars. Holy Trinity is a fine high Victorian Church built in 1860 and Grade 2* listed. It has a nave altar at the crossing and a high altar, an extremely good quality organ, and some beautiful stained glass windows. It is in a good state of repair. An infestation of bats causes some damage and mess during their nesting season but regular cleaning and covering of the brasses has helped to keep damage down. The Churchyard is in good condition but has nearly run out of space. Land adjacent to the Church has been donated for an extension, yet to be consecrated. There are currently no bathroom or kitchen facilities in the Church but people are directed to the nearby pub for toilets. Holy Trinity has a 'blower' heating system which uses oil and electricity. There are also heated pew seats powered by electricity.

St. John's is the original Parish Church and is Norman in origin. Much reduced in size since 1860, a large part of its stone was used in the construction of Holy Trinity. It is used in the winter months after Christmas as it is easier to heat. Music is provided by a harmonium. There have been no regular burials at St. John's for over 50 years. This Church also has no modern facilities attached although the school can provide facilities for family services. The heating and lighting are powered by electricity.

Finances

Copies of the Church accounts are enclosed. There are no major debts.

The upkeep of both Churches has been underpinned by fundraising and gifts from the local charity clay shoot.

The Parish share, which is combined with Ninebanks is paid to date.

Regular giving is partly done via Direct Debit but most worshippers also use envelopes so the Church can take advantage of the tax rebate on their gift.

The PCCs of Allendale and Whitfield approve and share any expenses paid to the incumbent



Together we can and with God's help we will.

HOLY TRINITY OUTREACH and COMMUNITY INVOLVEMENT

Clergy are encouraged to attend church social and fund-raising events, whether to raise money or just enjoy meeting the local community. Some activities take place at the Parish Hall which is next to the pub, some are run by the WI. Teas are often served at the village hall or pub following a funeral or christening at Holy Trinity.

Recently all three Parishes joined together to host an 'Angels' exhibition with a winning exhibit given an embroidered angel. It had been planned to hold a similar event this year but due to Covid it was held online with people sending in photos of their exhibits.

There is an annual charity clay shoot (the fundraising from this helps support the church), an active WI, a quoits team, pool and darts teams. Whitfield has an annual fair in September at which the church has a stall. There is a thriving 'Leek Club' who exhibit their produce at the pub and auction it afterwards.

There is a big celebration on bonfire night in the area next to the pub which attracts young people from the surrounding area.



Relationships

The Candlemas service at St John's and the Nativity Plays, Christmas and Remembrance services at Holy Trinity are popular and generally attended by the wider community.

The deanery representative reports back to the PCC on deanery meetings and some PCC members have joined in with deanery events. These have often proved useful in giving ideas on how to progress local projects.

There is an annual joint parish outing and a deanery walk with other parishes which gives an opportunity for more socialising with other parishes within the deanery.

The Christmas Quiz in the pub and refreshments after the nativity plays are a welcome part of Advent. The Whitfield Fair and the joint church exhibitions in September have been missed this year as have the loyal band of flower arrangers and those who look after so much in the church.

The Future

Looking ahead, we hope that we can re-start the activities and events we had before Covid, develop meetings for those unable to get to Church, maintain and develop the online presence which has been so helpful to so many people over the Covid period, particularly those living alone and those unable for whatever reason to get to Church services and re-start training for 'Open the Book'. The services and zoom coffee mornings have led us all through a worrying time and the world this has opened up is inspiring.

Together we can and with God's help we will.



The Benefice — Joint Projects and Achievements

Parish Outings

The first outing was to Lanercost Priory and subsequent destinations have been to Blanchland Abbey (photo on the left) and St Thomas' church in Stanhope. Each outing takes the same format:

- packed lunch and familiarising game/exercise in St Cuthbert's church hall
- followed by a guided tour and tea at the venue

The outings have been greatly appreciated and enjoyed. We've also had a joint 'at home' consisting of a pie and pea lunch with beetle drive.

Festival of Angels

This began at Michaelmas in 2019 and was well supported by the wider community. Participants created and displayed an angel in one of the three churches.

Know your Church Know your Neighbourhood

This was an initiative by the Diocese of Newcastle. Members of the three parishes explored ways of connecting and interacting more with the wider community by carrying out 'Prayer Walks' to gather information and interviewing local people. Although acknowledging that there already existed a good deal of interaction and involvement between church and community, it was a pleasant surprise to find out that folks were positively interested in forging better links.

The outcome was to organise a free 'showcase' day for local voluntary organisations. The positive response was very encouraging, sadly we had to cancel the May 2020 date, but we are fully committed to resurrect the plans as soon as possible.

Website and Social Media

We have a very useful, informative and user friendly joint [Website](#), [Facebook page](#) and [Twitter](#) account.

Allen Valleys Get Together Group

Although this group is not 'church led' it is run and organised by church members who in some ways promote the church's ethos. It was set up to help address loneliness and isolation in both valleys and has a membership of 20-30 people with a wide range of belief and non belief. Attendance is non-committal, meetings are held weekly in the church hall and there are also several annual outings.

Eco Church

We started our Eco Church project in March 2020. A small working group meets regularly to develop ideas. We have made good progress, including having a series of services linked to Creationtide, an ecumenical climate vigil, a series of Money Makes Change Workshops, a vigil for Earth Hour and a Zoom Watch Party for Christian Aid Week.

We also produce weekly 'eco tips' which are published in the regular 'pew sheet', on our website and facebook pages. We have ambitious plans going forward including a Climate Sunday service involving the wider community and 'Count on Nature' in our churchyards.

Other aims are to work towards becoming Fairtrade churches, develop the churchyards for wildlife and attain our first Eco Church award. We are also investigating the possibility of solar panels for the church roofs.

The enthusiastic support and involvement of our new Rector would be essential to the continued success of the project.

Virtual Services/Events during 2020/21

When the Covid pandemic started our churches were closed and we moved online the same week. A telephone 'buddy' system was implemented. We began with pre-recorded services on YouTube and developed into Morning Prayer Services via Zoom, live streamed onto YouTube. These Services are very popular both in our own community and further afield. We have a virtual coffee morning after the service where invited speakers entertain us with a talk. There is a Compline Service each Wednesday evening which offers a quiet reflective way of worship.

- Sunday Morning Worship
- Midweek Compline
- Sunday Coffee and Conversation (with speaker)
- Twice weekly social chat sessions
- Mothering Sunday
- Good Friday Passion Play
- All Souls' Service
- Remembrance Service
- Christingle
- Carol Service
- Nativity
- Candlemas
- Zoom Choir
- Festival of Angels
- Scarecrow Festival
- What 3 Words
- PCC Meetings
- Weekly 'Pew Sheet' by email to 90+
- Eco Church

These online services and activities have been a life-line to everyone and have highlighted various needs within our church family and wider community. We have supported and nurtured each other throughout this difficult period in our lives. Some of these meetings will most probably cease when life resumes normal activity, but some will carry on to support those who are isolated or have mobility issues.

Together we can and with God's help we will.



The Rectory, 16 Forstersteads, Allendale, Hexham, Northumberland. NE47 9AS

The Rectory

- Modern detached house
- Secluded position on a private housing estate
- Fairly large private gardens
- Within walking distance of centre of Allendale
- Five bedrooms
- Study
- Living Room
- Dining Room
- Kitchen
- Upstairs bathroom
- Downstairs toilet
- Utility Room
- Garage
- Air Source Heating
- Solar Panels

Together we can and with God's help we will.

PAROCHIAL CHURCH COUNCIL OF ST CUTHBERT'S CHURCH, ALLENDALE

Financial Statements for the Year Ended 31 December 2020

Receipts and Payments Accounts		Unrestricted General Fund	Unrestricted Designated Fund	Restricted Fund	Restricted Fund	Endowment Fund	Total 2020	Total 2019
Holder of Fund Authority	Specific Purpose	PCC	PCC	Late A M Woodhead Chiming Clock Upkeep				
Note		£	£	£	£	£	£	£
Receipts								
Voluntary receipts								
	Planned giving	20470					20470	19474
	Collections at services	341					341	2330
1	All other giving and voluntary receipts	2106		1000			3106	13116
	Gift Aid recovered	6835					6835	5752
		29752		1000			30752	40671
2	Activities for generating funds	1367					1367	1293
3	Investment income	2	6				8	60
4	Church activities	2948					2948	3506
5	Other receipts	17094					17094	8348
	Total receipts	51164	6	1000			52169	53878
Payments								
Church Activities								
	Diocesan parish share	24850					24850	24363
6	Clergy and staffing costs	859					859	3304
7	Church running expenses	12109					12109	14761
8	Hall running costs	4611					4611	5803
9	Church repairs and maintenance		2485				2485	1615
10	Hall repairs and maintenance							250
11	Mission giving and donations	780					780	650
		43209	2485				45694	50746
Cost of generating funds								
Governance Costs								
12	Other Payments	32					32	8159
	Total Payments	43241	2485				45726	58905
	Excess of receipts over payments	7923	-2479	1000			6444	-5026
	Diocese Sequestration Account	358					358	
	Whitfield Recharge Account							
	Cash Transfers between Accounts							
	Non-Cash Transfer between Funds							
	Net movement in funds	8281	-2479	1000			6802	-5026
	Cash at bank and in hand at 1 Jan	2630	8958				11588	16614
	Cash at bank and in hand at 31 Dec	10911	6478	1000			18390	11588

Together we can and with God's help we will.

PAROCHIAL CHURCH COUNCIL OF ST CUTHBERT'S CHURCH, ALLENDALE

Financial Statements for the Year Ended 31 December 2020 continued

Statement of Assets and Liabilities	Note	Unrestricted Fund	Unrestricted Designated Fund	Restricted Fund	Restricted Fund	Endowment Fund	Total 2020	Total 2019
Holder of Fund Authority		PCC	PCC	Late A M Woodhead				
Specific Purpose				Chiming Clock Upkeep				
Cash Funds								
Lloyds Bank - Treasurers Account		10911	5115	1000			17027	10230
CCLA - The CBF Church of England Deposit Fund			1363				1363	1357
		10911	6478	1000			18390	11588
Other Monetary Assets								
HMRC Gift Aid Tax Recoverable		4187					4187	6830
Renewable Heat Incentive (RHI) for quarter to December 2020 not received until January 2021		1322					1322	2036
Investment Assets (at market value)								
CCLA								
The CBF Church of England Investment Fund	13		10046				10046	9116
Diocese of Newcastle								
The CBF Investment Fund	14					51427	51427	48095
CBF Deposit	14					8855	8855	7381
			10046			60282	70328	53894
Other Monetary Liabilities								
Delivery of biomass pellets in December 2019 , invoice not paid until early January 2020								822
								822

Together we can and with God's help we will.

Whitfield with Ninebanks PCC. 31.12.2020.

Notes on accounts and deposit account fund allocation.

Treasurers account balance is £3,490.75

Deposit account balance is £24,063.06

As at the end of December 2020, the allocation of funds in the deposit account are as follows.

St Marks Church Hall Fund.	£11,929.70
HT Fabric Fund	£10,581.40
St Marks Building Fund	£1,279.74
HT Church Yard	£66.33
St Johns Church Yard	£205.89

St Marks Church Hall Fund is enhanced by £10K. An unconditional grant from NCC.

The repairs to HT roof, cost £5,142.00 and this cost was covered by the Clay Shoot. Many thanks.

Grass cutting at Carrshield has been paid £225 and the Diocese have re-imbursed the PCC.

Grass cutting at St Marks has been paid £550 (£50 less than last year)

Tree work at St Marks at a cost of £140.00 has been paid.

Stone wall repairs at St Marks at a cost of £420.00 has been paid.

The Churchyard extension legal costs have been paid to Sintons. Thanks to the Clay Shoot for their financial support.